

Campsite Domaine de la Grande Cascade

Altitude 1 280 m



Open from
26/05 to
25/09

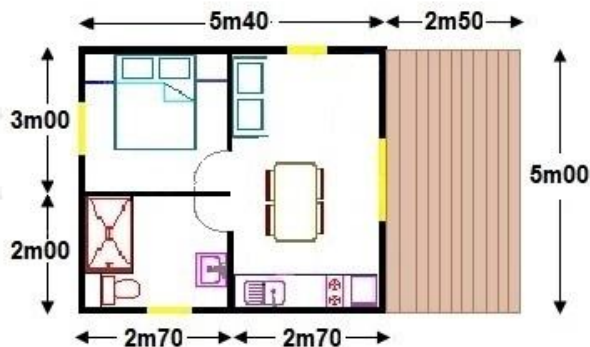
Reception
from 9:00
to 8:00pm

Route de Besse
63240 LE MONT DORE
☎ +33(0)4.73.65.06.23

RCS Clermont-Fd 908617491
TVA FR1908617491
APE 55.30Z

Camping 2 stars the 16/06/2022
Classification order C63.040471-003
90 pitches on 2 ha

www.camping-grandecascade.com



Description of the cottage rental

(Built in 2013, on the pitches n°46 and n°47)

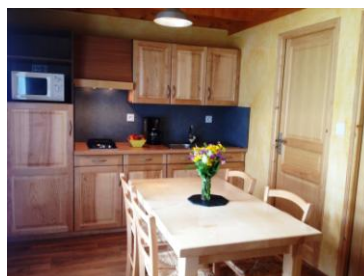
2 Wood Cottages 2 people Area: 27 m² + terrace (12m²50)

Rented from May 13 to October 15, 2023



- Interior wood, beams in all the pieces
- Fitted kitchen including fridge, gas hob, extractor hood, microwave, coffee machine, sink with drainer
- Dining room table + 4 chairs, daybed, Television
- A master bedroom with bed 140 + duvet + pillows + storage cabinets.
- Bathroom with toilet, shower 120cm, sink, towel heater
- Electric heater in every pieces
- Large bay window overlooking a wooden terrace (5m X 2,50m)
- Wooden picnic table
- Kitchenware: 8 dinner plates, 8 glasses, 4 cups coffee, 4 bowls, 2 big bowls, 1 salad spinner, 3 pans, 1 small pot with lid, 1 big pot with lid, 1 skillet, 4 forks, 4 knives, 4 tablespoons, 4 teaspoons, a paring knife, 2 spatulas, a can opener, a bottle opener, a slotted spoon, a ladle, a colander, a cutting board and knife, a basin, a broom, a drying rack, a vacuum cleaner, household products

Chalet 2 persons	Rates 2023 per week depending on periods listed
Saturday 13/5 → 24/6 or Sunday 14/5 → 25/6	360 €
Saturday 24/6 → 01/7 or Sunday 25/6 → 02/7	385 €
Saturday 01/7 → 08/7 or Sunday 02/7 → 09/7	395 €
Saturday 08/7 → 15/7 or Sunday 09/7 → 16/7	550 €
Saturday 15/7 → 19/8 or Sunday 16/7 → 20/8	575 €
Saturday 19/8 → 26/8 or Sunday 20/8 → 27/8	550 €
Saturday 26/8 → 02/9 or Sunday 27/8 → 03/9	390 €
Saturday 03/9 → 29/10 or Sunday 04/9 → 30/10	360 €
Supplement for one pet*	20 € for a week



Rentals are from Saturday to Saturday or from Sunday to Sunday, arrived the afternoon from 4:00 p.m., depart the morning before 10:00 a.m. The rates include electricity and gas. The booking fee is 10 €. The tax is extra: 0.20 euro per person per night from 18 years. It is claimed **30% of the booking** (bank transfer), the **balance on arrival by cash** (Bank Card from June to September), and a deposit of 200 €. PS: If you prefer, you can pay for the balance, few days before your arrival with bank transfer.

Remember to bring your own sheets, pillowcases, and towels!

Important: Services and leisure at the campsite are only open on the operating period of the campsite (10/6-26/9)

*Dogs, cats and other pets may be allowed because of an animal by cottage and with conditions

For further information, please contact us : ☎ +33(0)4 73 65 06 23